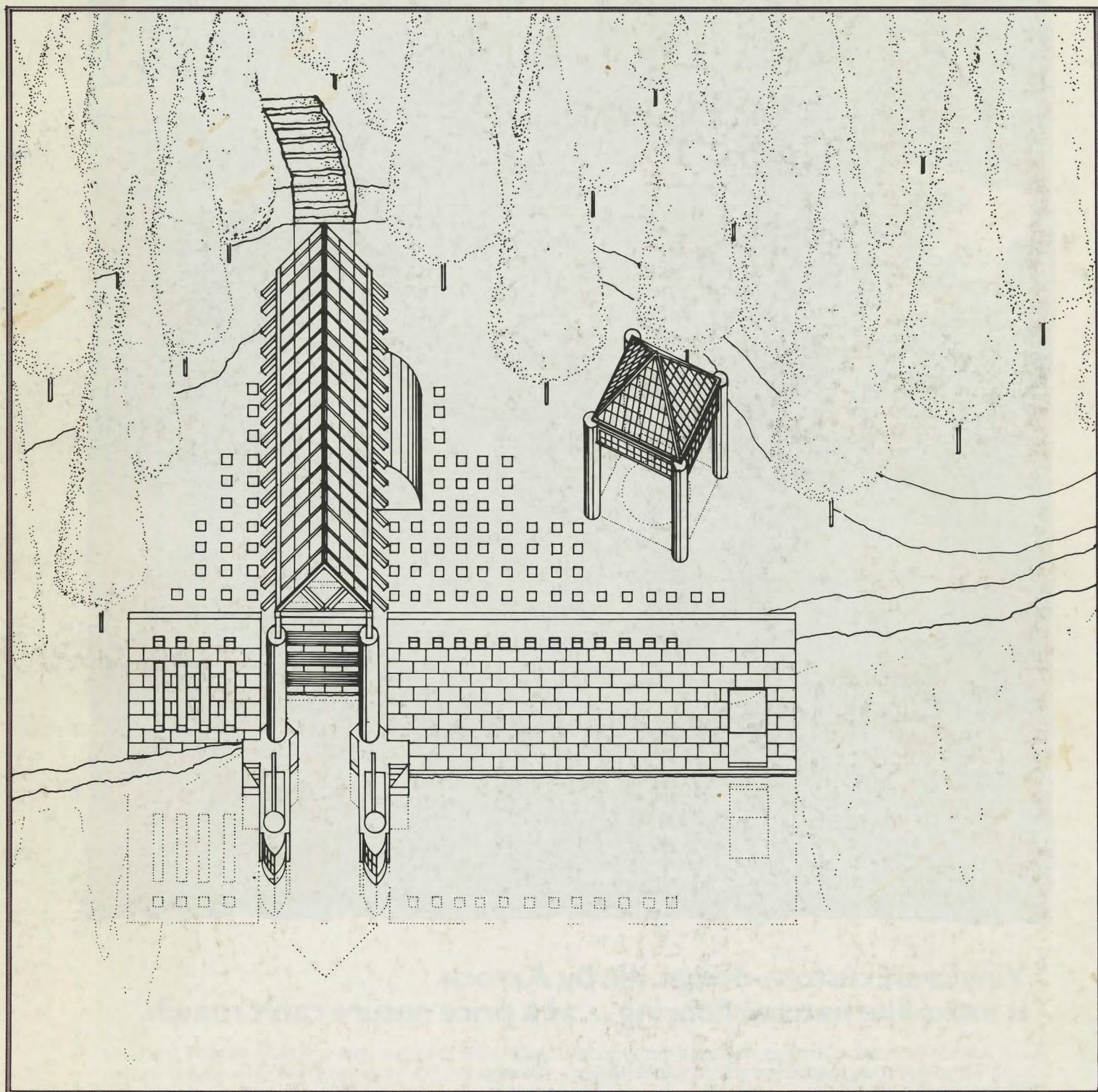


# Progressive Architecture

January 1982



29th annual P/A Awards

# Gwathmey Siegel & Associates Architects

A country house in the grand tradition becomes an intense exploration of layering and transparency, extending into the landscape.

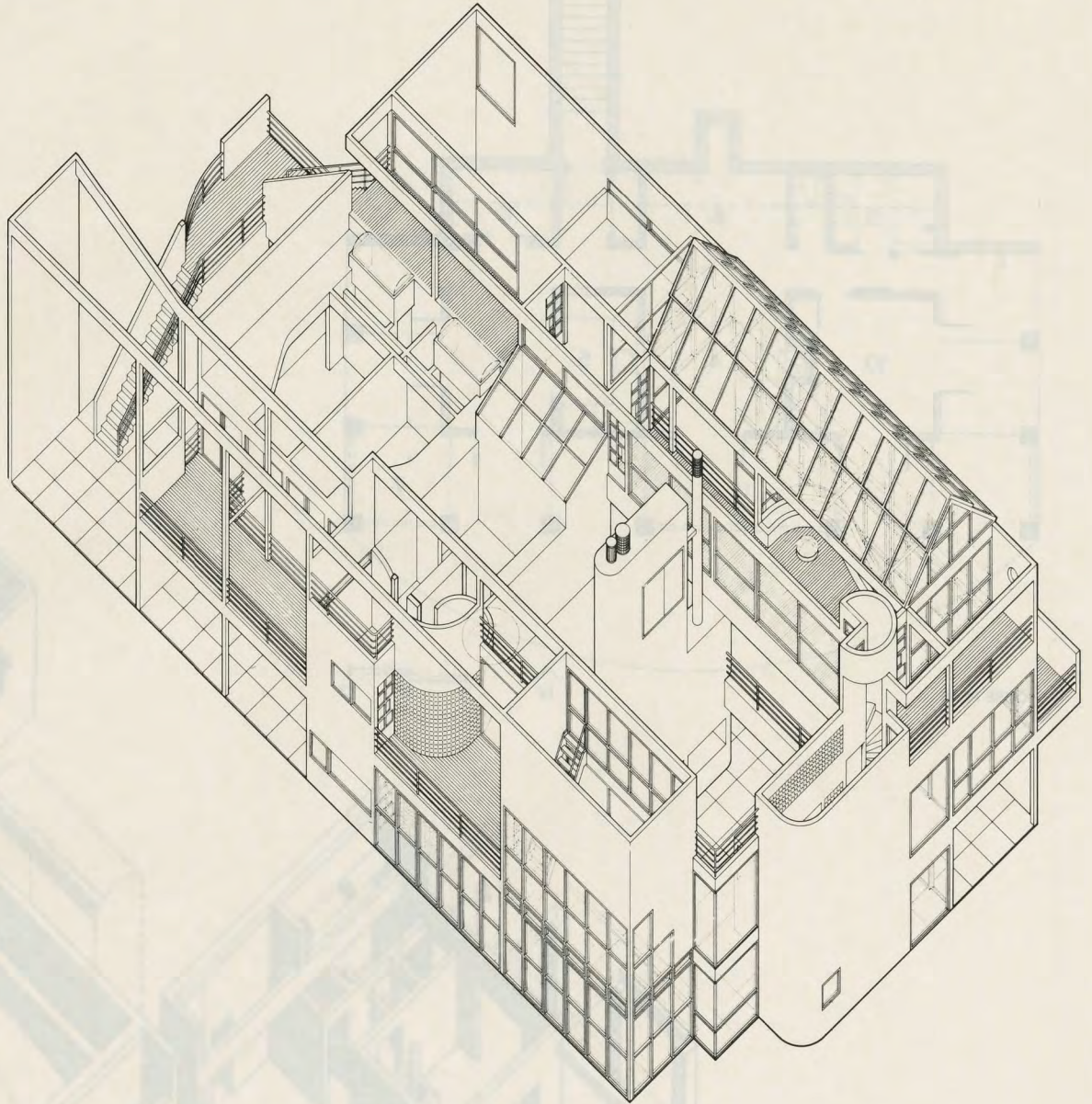
## Credits

**Architect:** Gwathmey Siegel & Associates, New York, Bruce Nagel, project architect; Daniel Rowen.

**Consultants:** Flack & Kurtz, mechanical, Geiger Berger, structural, CHA Design, lighting, Daniel Stuart, landscape architect; Caramagna & Murphy, general contractors.

**Modelmaker:** George Raus-tiala.

**Model photographer:** Nathaniel Lieberman.



**Project:** Residence, Long Island, NY

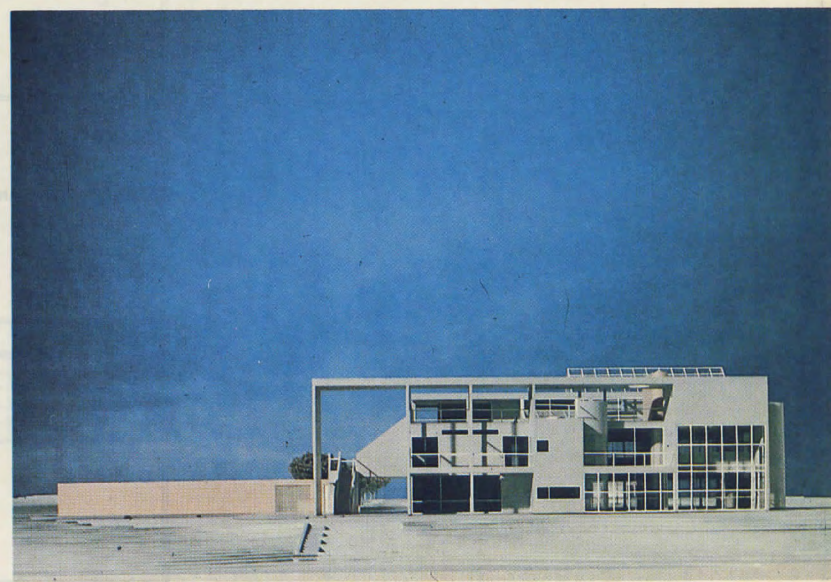
**Program:** 10,000-sq-ft house with formal drive, entry gate, pond, tennis court, garden, arbor, pool, and caretaker's house. The four-bedroom house contains a movie theater, wine cellar, exercise room, greenhouse, and third-floor sitting loft and kitchenette in addition to usual residential elements.

**Site:** Six acres bounded by trees on east and west, double dune and ocean to the south. Access is from the north.

**Solution:** A combination of simple plan and very complex sections. The interlocking sequence of spaces and intense layering suggest a multifaceted object which, however it divides into individual spaces and rooms, continually asserts the whole. The outdoor sequence, beginning with the caretaker's house

and garage as foreground pieces, is integral to the design.

**Construction methods and materials:** Steel and wood frame. Exterior finish is tongue-and-groove cedar siding. Interior finish is plaster. Ground level is floored in black granite; upper floors are mahogany. All cabinetry is mahogany. Outdoor paving is Vermont green slate. The drive and auto court are of cobblestone. Outbuildings are finished in stucco.



- Legend
- 1 Pool Terrace
  - 2 Guestroom Lobby
  - 3 Gallery
  - 4 Bedroom
  - 5 Library
  - 6 Guestroom
  - 7 Guestroom
  - 8 Living Room
  - 9 Kitchen

## Award

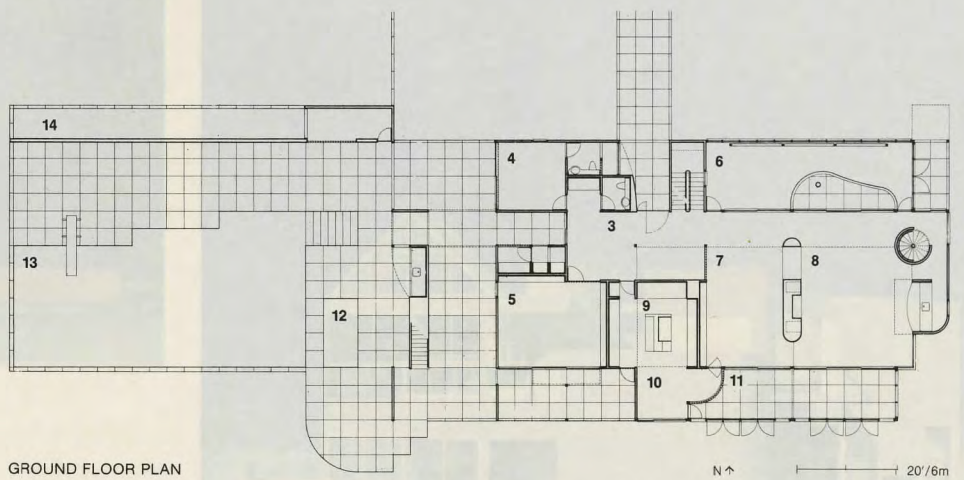
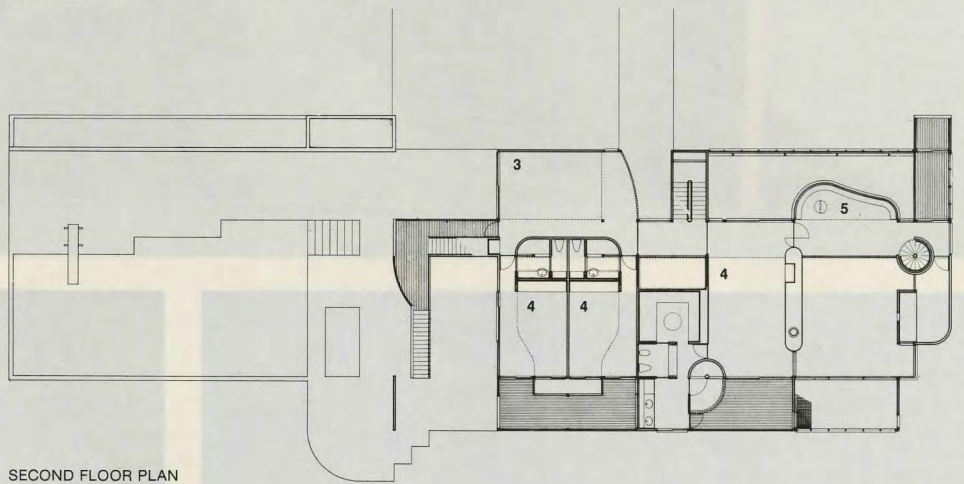
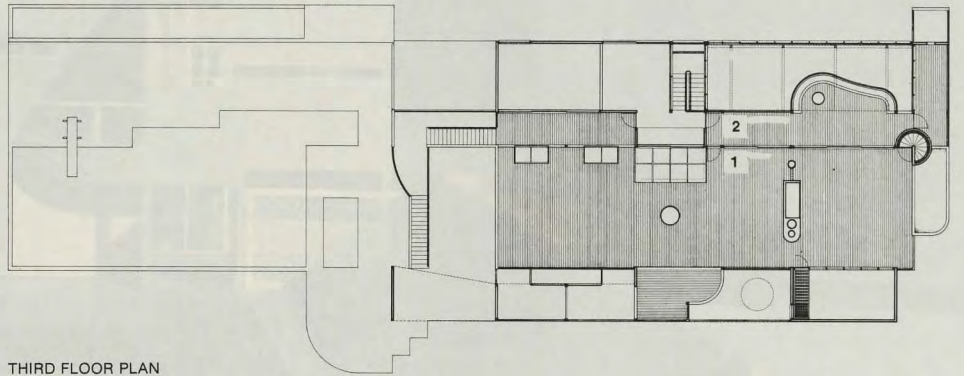
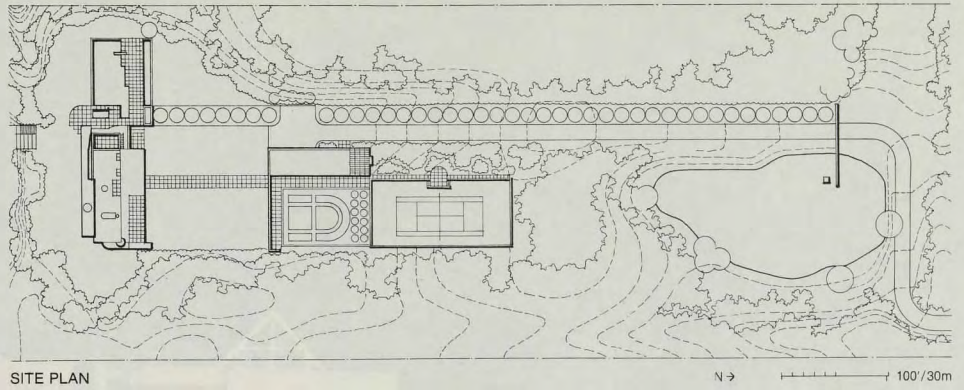
### Jury comments

**Freed:** It's a very grand house, set way back on the site. You have to penetrate the site to get to the house, but the house has the entire ocean at its front door. It distinguishes clearly between ocean side and private side. It uses the device of a greenhouse to bring vast amounts of light into what would otherwise be relatively obscure spaces. The language is handled extremely well. It extends itself into the grounds and accessory buildings. It has a processional arrival and a controlled spatial deployment. It becomes a piece to be looked at from the sea as well as to look at the sea.

**Cook:** A very highly studied solution.

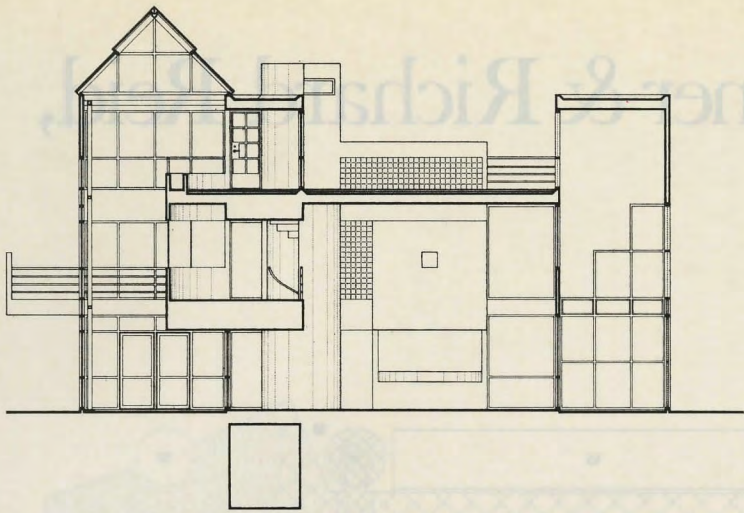
**Graves:** The outbuildings appear to be polychromed or at least different from the house, with smaller elements of the same variety as those of the house and maybe suggesting a kind of servant idea with those elements.

**Freed:** The house plays with transparency of space, group space, private space, always leading to the ocean as culmination, as the primary and dominating referential line.

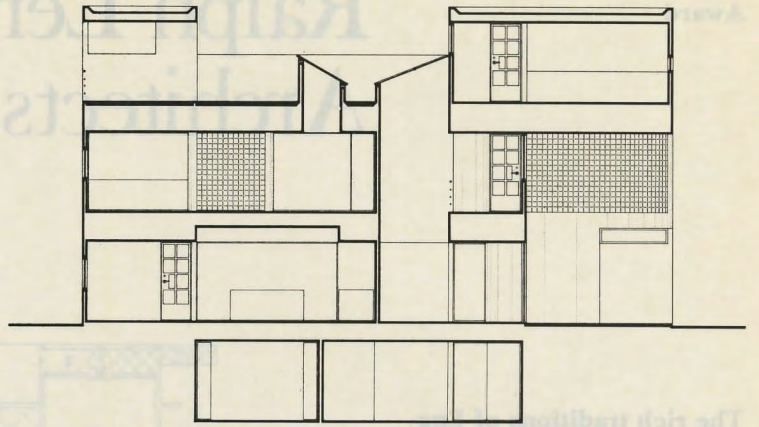


### Legend

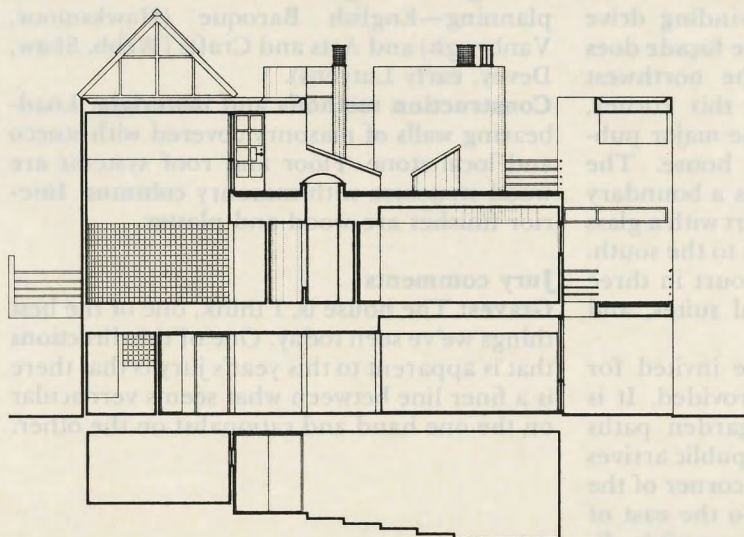
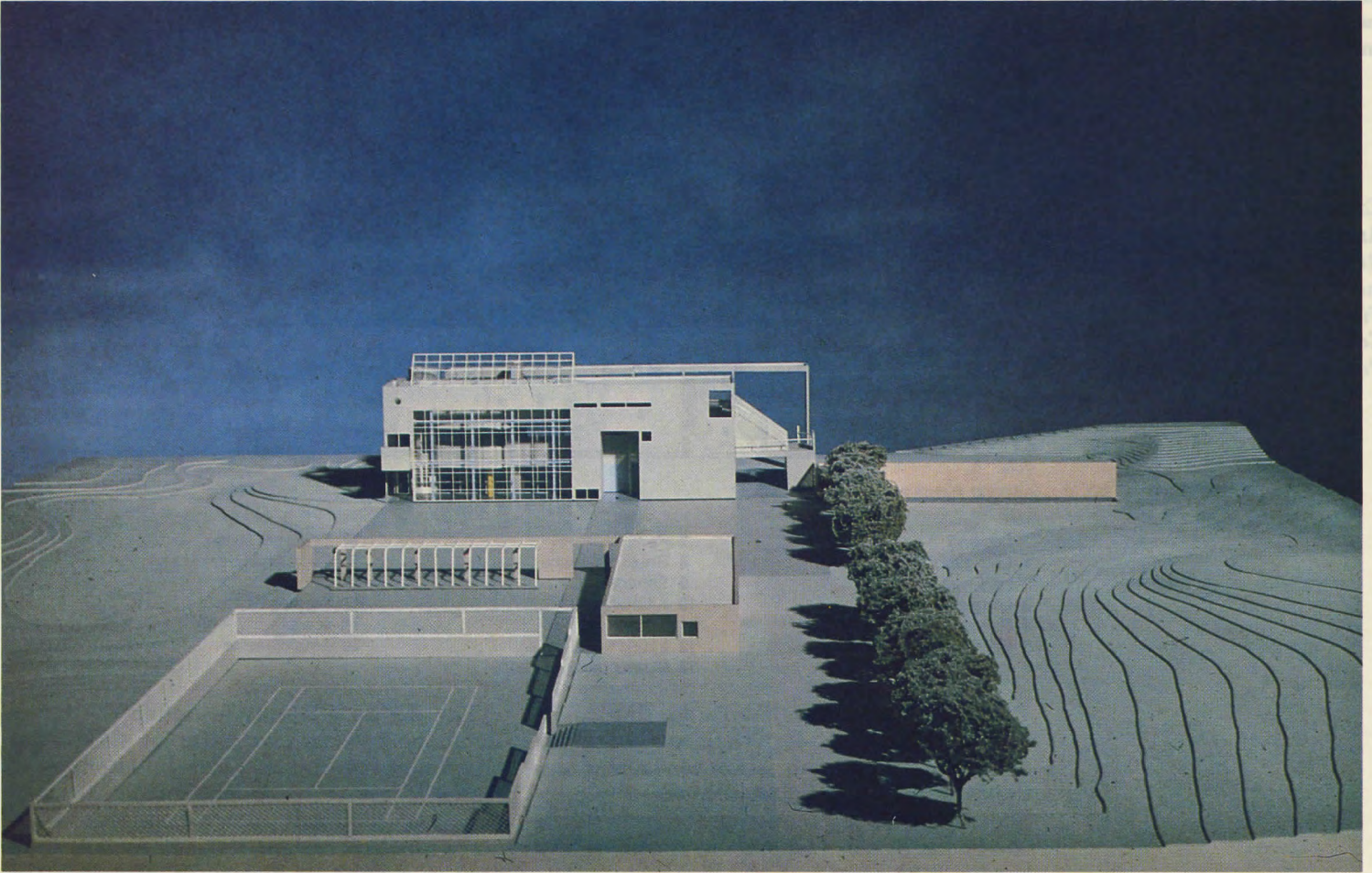
- |                      |                    |
|----------------------|--------------------|
| 1 Roof terrace       | 10 Breakfast room  |
| 2 Greenhouse balcony | 11 Screen porch    |
| 3 Gallery            | 12 Jacuzzi         |
| 4 Bedroom            | 13 Swimming pool   |
| 5 Library            | 14 Reflecting pool |
| 6 Greenhouse         |                    |
| 7 Dining room        |                    |
| 8 Living room        |                    |
| 9 Kitchen            |                    |



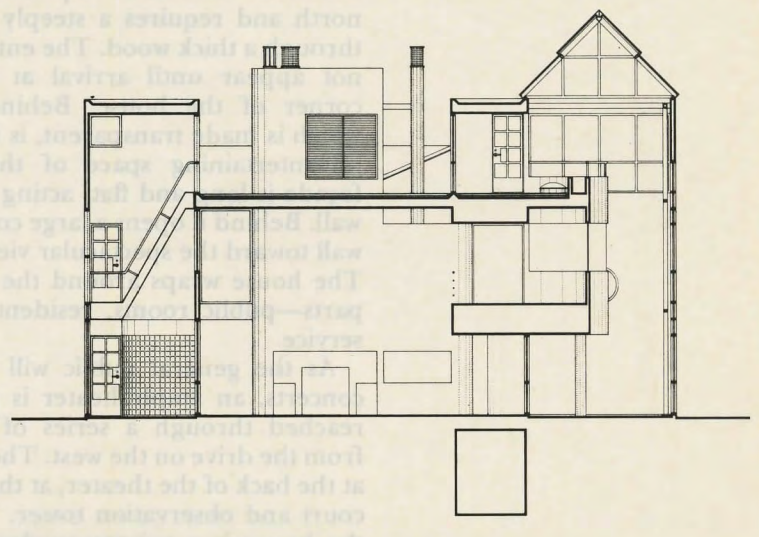
SECTION THROUGH GREENHOUSE, LIVING ROOM & SCREEN PORCH



SECTION THROUGH KITCHEN, ENTRY & LOFT



SECTION THROUGH THEATER, LIBRARY & GALLERY



SECTION THROUGH SCREEN PORCH, LIVING ROOM & GREENHOUSE

# Gwathmey Siegel & Associates Architects

**Winner of an invited competition at the University of Nebraska-Lincoln, the proposed Alumni Center will provide a home for various functions serving returning Nebraskans to events throughout the year.**

## Credits

**Architects:** Gwathmey Siegel & Associates, New York, NY, Bruce Nagel, associate project architect. **Design team:** David Steinman, Thomas Phifer, Paul Aferiat, John Meder, Richard Clarke, Frank Lupo, Thomas Whitrock.

**Consultants:** Raymond G. Alvine & Associates, mechanical, Severud Perrone Szegezdy Sturm, structural.

**Modelmakers:** Frank Lupo, Richard Clarke.

**Model photographer:** George Raustiala.

**Client:** University of Nebraska Alumni Association.

**Project:** Milton I. Wick Alumni Center, University of Nebraska, Lincoln.

**Program:** New home for the Nebraska Alumni Association, The Wick Center will provide office, conference, library, and record storage areas for association administration, in addition to reception, entertainment, and kitchen spaces. Total gross area is 23,000 sq ft on four floors plus basement.

**Site:** L-shaped flat corner lot with setback, side and rear yard constraints, adjacent to a monumental Historical Society building and a residential-scale sorority house.

**Solution:** Keeping the building on the western, and deeper, end of the site, the new design will reoccupy the area covered by the previous home of the Association, a converted residential structure. Thus placed, the new building does not block the south view and light from the sorority, but enhances it with the new garden, which reaches along "R" Street to the corner of 16th Street. All main public spaces are on the ground floor, including the Great Hall, exhibition spaces, library and board room. An atrium, which is the central focus space, is a vertical shaft the full height of the building, bringing light to all floors below. On days of major alumni events, the facility is designed to open up to allow easy flow of crowds between spaces. Upper floors include balconies overlooking the Great Hall, office and conference room spaces, and editorial offices. The fourth floor contains a lounge and major roof terrace areas as optional and/or supplementary outdoor entertainment space.

**Construction methods and materials:** Steel structural frame; brick veneer; slate copings and windowsills, teakwood window and door frames, slate flooring; mahogany interior

walls, polished brass fixtures, gypsum board walls and acoustical ceilings in common areas.

## Jury comments

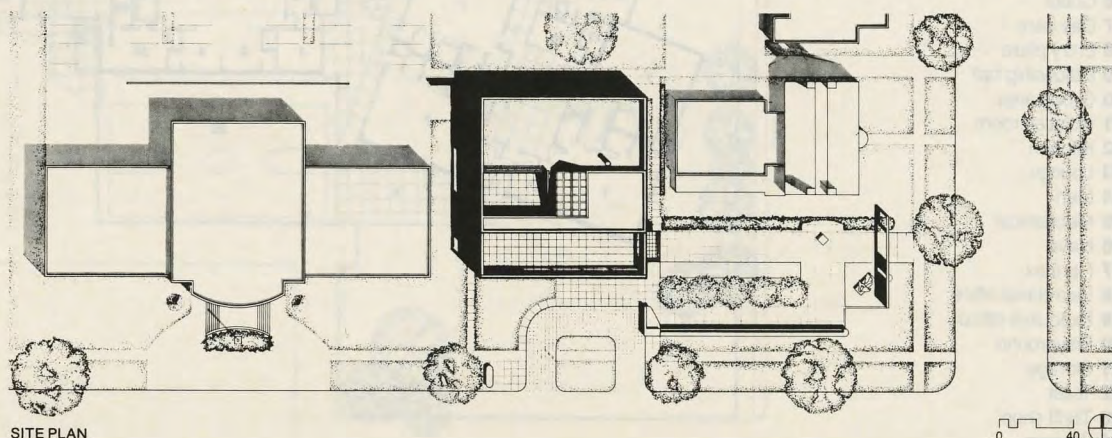
**Freed:** In a very formalist way, it integrates all the levels and interlocks them so that one is constantly aware of the presence of other parts of the building. The photographs we see of the model show it to be luminous at night. In the daytime, light comes from a small atrium, an organizing center about which everything spills.

**Beeby:** For work in the idiom, which is a known idiom, it's not overly successful. It's actually kind of awkward in the way it handles the openings and the way spaces are cut through from top to bottom.

**Graves:** Compositionally, I think it lacks something. I think the two most successful elements of this scheme are the central space and the exterior garden, which is partially defined by the building and enclosures to give a place for meeting outside. Shafts of light come down through the central space. Jim, you said it was a tight site: isn't this part [to the east] of the site?

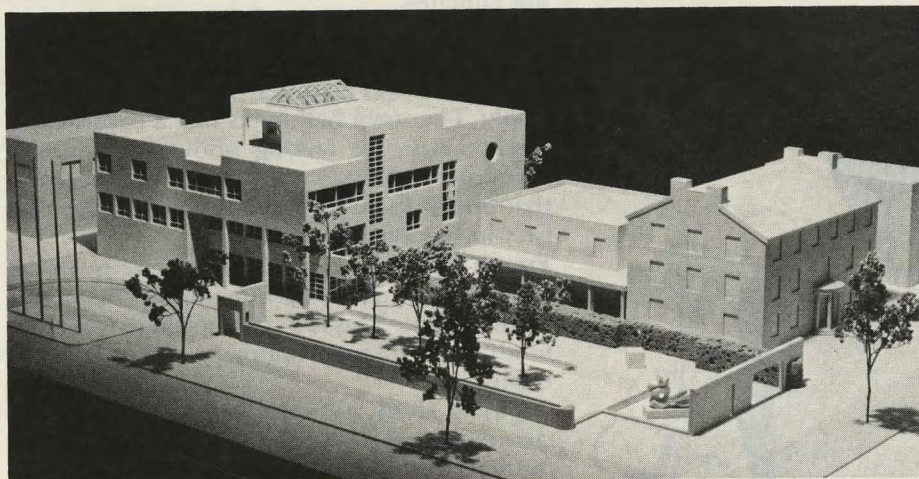
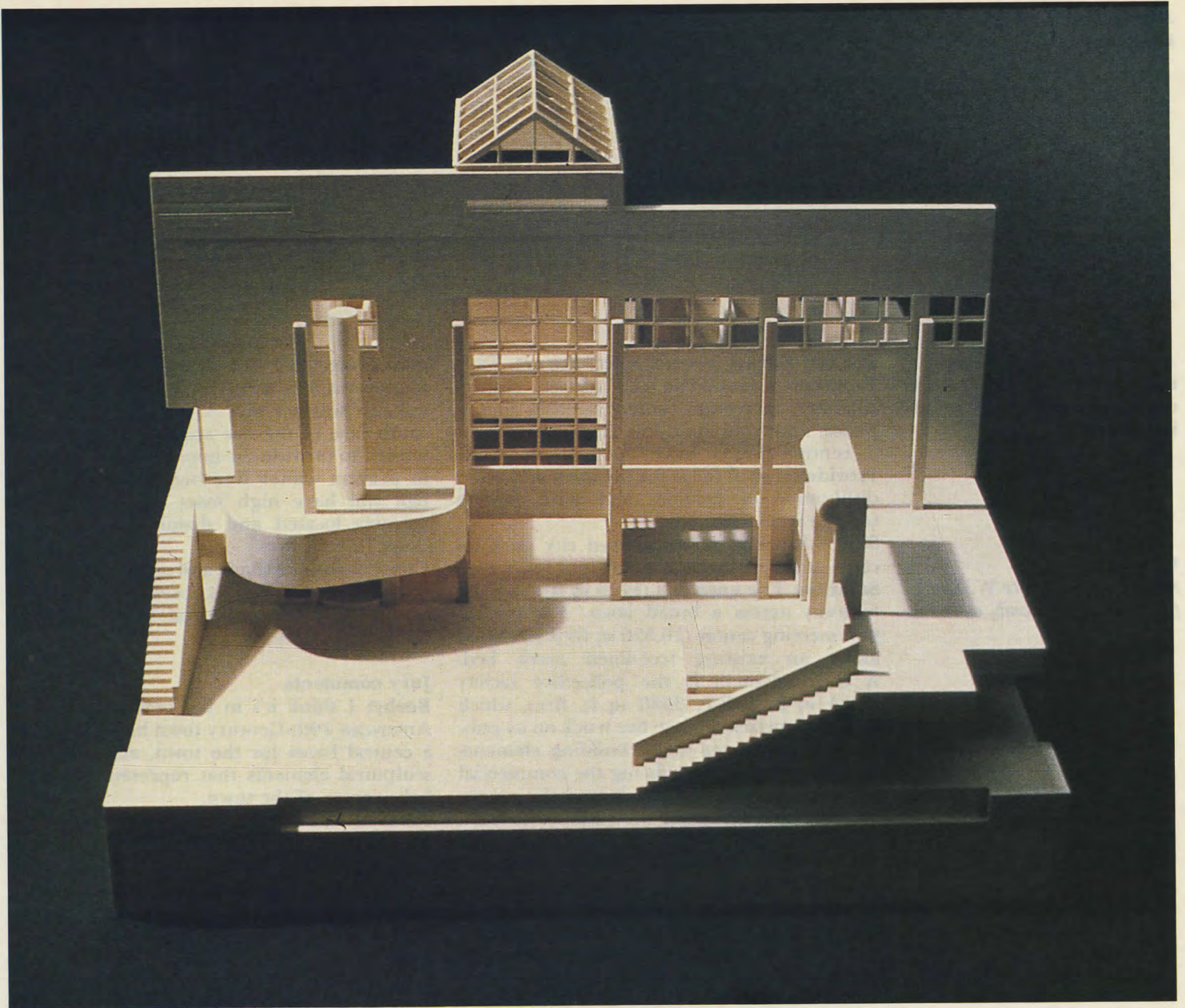
**Freed:** Yes, but there are enormous setback regulations so that anyone who tried to utilize that for construction found himself running out of space very quickly. For what it's worth, I've seen the model, and the skill is in taking a very tight space and developing within it a progression and a quality of light that is really quite wonderful.

[Juror Freed and P/A Executive Editor James Murphy were both familiar with this entry, having served on the jury for the limited competition by which the architects were selected.—Ed.]



SITE PLAN

0 40



*With walls removed, model depicts the great hall space (top) adjacent to full-height atrium. View from the southeast (above) includes existing sorority house (right) and new garden from the street corner to the new center*

**Legend**

- 1 Great hall
- 2 Kitchen
- 3 Board room
- 4 Atrium
- 5 Library
- 6 Reception
- 7 Lobby
- 8 Exhibition
- 9 Balcony
- 10 Open
- 11 Audio visual
- 12 Conference
- 13 Secretarial
- 14 Administration
- 15 Student Alumni Board

